

DH Series

Hand Valve

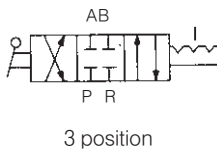
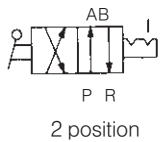
Directional Control Valve

DH Series

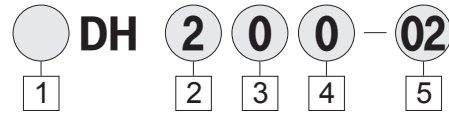


- Porting of Rc(PT) 1/4, 3/8 and 1/2
- Improved abrasion resistance
- Aluminum die casting design for heavy applications
- Detented center position

< Symbol >



How to Order



1 Series

Blank : Metric (PT)
U : NPT

2 Body Size

2 : Cv 0.4 (1/4" NPT(PT) Only)
3 : Cv 1.1 (3/8" NPT(PT) Only)
4 : Cv 3.1 (1/2" NPT(PT) Only)

3 Piping direction and mounting

0 : Side piping / Body mounting
1 : Side piping / Panel mounting
2 : Bottom piping / Body mounting
3 : Bottom piping / Panel mounting

4 Position Symbol

0 : 3 Position Closed Center
2 : 2 Position

5 Port Size

02 : 1/4
03 : 3/8
04 : 1/2

Standard Specifications

Fluid	Air
Guaranteed Pressure	15kgf/cm ²
Max. Operating Pressure	9.9kgf/cm ²
Ambient and Operating Fluid Temperature	5~60°C (40~140°F)
Operating Angle	90°

Model

Series	Port Size		Number of Positions	Effective Orifice mm ² (Cv factor)	Weight (kgf)	Piping
	DH	UDH				
DH200	Rc(PT)1/4	NPT1/4	3(Closed Center)	7.5(0.4)	0.55	
DH300	Rc(PT)3/8	NPT3/8	3(Closed Center)	20(1.1)	0.9	
DH400	Rc(PT)1/2	NPT1/2	3(Closed Center)	55(3.1)	1.6	
DH202	Rc(PT)1/4	NPT1/4	2Position	7.5(0.4)	0.55	
DH302	Rc(PT)3/8	NPT3/8	2Position	20(1.1)	0.9	
DH402	Rc(PT)1/2	NPT1/2	2Position	55(3.1)	1.6	